



Summer 2006

# Leading the way...

## GIRLS GET INTO GEAR

WOMEN IN LOGISTICS  
page 1

ONLINE RESOURCES ON ADR REVISIONS 2007  
page 1

HSE CONSULTATION  
page 2

PARTNER PROFILE: ACUMEN DISTRIBUTION  
page 2

LABYRINTH MD RUTH WARING has been busy lately, co-ordinating a series of Regional Forums as part of the Women in Logistics research project.

The project, which is being jointly organised by Nortec Training and Skills for Logistics, is funded by the European Social Fund and aims to gather further information on why women fail to join the industry, why, if they do, they don't progress and why they choose to leave. The project also aims to establish a 'plan for action', whereby both women and men working in logistics can make changes at local and national level to make the industry more attractive to women and girls.

Twenty women gathered for the first Forum in Banbury, and 30 came along to the Burton-on-Trent event. Also present was the (in)famous Girls in Gear pink truck, which has been designed to attract younger women and



RUTH WITH A SELECTION OF THE BURTON-ON-TRENT DELEGATES

girls into the industry as lorry drivers.

Further Forums are planned; if you would like to attend or find out more please email Ruth at [ruthwaring@labyrintholutions.co.uk](mailto:ruthwaring@labyrintholutions.co.uk). All women working in the industry can help the research project by completing the online questionnaire at <http://gendersurvey.nortectraining.com>.

## Revisions to European dangerous goods regulations

### AUTHORISATION NO 53

Go to [www.dft.gov.uk](http://www.dft.gov.uk)  
Type 'Authorisation 53' into search box

### 2007 ADR CHANGES

Go to [www.dft.gov.uk](http://www.dft.gov.uk)  
Type 'ADR and RID changes' into search box

### CARRIAGE REGULATIONS PROBLEMS

Go to [www.hse.gov.uk/cdg/manual/commonprobs.htm](http://www.hse.gov.uk/cdg/manual/commonprobs.htm)

EVERY TWO YEARS the content of ADR is revised to bring it up-to-date. Changes to ADR are reflected in the UK Carriage Regulations, which, whilst they do not exactly follow ADR, do effectively

implement ADR in the UK. 2006 is such a year with changes coming into effect next January.

Some of the changes are intended to be beneficial to business, such as the maximum limited quantity for products assigned LQ19 has been changed from 3 litres to 5 litres – not a vast change but if you distribute cleaning

chemicals in 5 litre bottles then this can be significant. If it suits your purpose there is an Authorisation No 53, which allows changes to be implemented straightaway (see box for where to find it online). The Department for Transport has also published a summary of the ADR changes (see box).

And, finally, the DfT is going to be reissuing the current Carriage Regulations to reflect the changes in ADR 2007. The new regulations will be more user friendly and include all the current authorisations which allow a variation to the ADR requirements. If you have a problem with any aspect of the current regulations, the HSE website now has a useful 'common problems' page (see box). *Len Hall*

# HSE WORKPLACE TRANSPORT CONSULTATION



WORKPLACE TRANSPORT ACCIDENTS kill an average of 66 people each year with hundreds more seriously injured; the annual cost to the taxpayer is in excess of £200 million.

In response to these worrying statistics the Health & Safety Executive has recently announced a consultation period for their proposed Workplace Transport 'Route Map'. This document includes specific recommendations relating to workplace transport safety include Site Layout and Design, Vehicle Selection and Maintenance, Personnel and Management Responsibilities; overall it summarises the basics of best practice in industry.

Workplace transport covers almost all industries – it involves all cars, vans, lorries, FLT's and other mobile plant working *on site* making deliveries, loading and unloading and moving goods and people around the site. It specifically excludes vehicles on the road.

Labyrinth is asking all its clients and contacts to respond to the Route Map's recommendations during the consultation period, which ends on the 22 September. Full information is available online at the HSE website. Go to [www.hse.gov.uk](http://www.hse.gov.uk) and click on the 'Managing workplace transport risk' link and make sure that your company has its say.

## PARTNER PROFILE

### Keeping us on our toes at Acumen Distribution...



ACUMEN DISTRIBUTION has been a customer of Labyrinth for a number of years and uses Labyrinth to provide Health & Safety advice and assistance in all its depots across the UK.

Acumen enjoys a longstanding reputation within the industry for delivering a quality service including the carriage of dangerous goods, recycling management services and unaccompanied trailer movements in the UK and Europe.

Says Ruth 'I've known Chris Doughty, Acumen's MD, for ten years now and I've worked with Acumen for the past four. The range of activities covered by Chris and his team is extensive, and it certainly keeps the Labyrinth consultants on their toes. When Acumen recently installed of a large can sorting machine at one of the recycling centres we provided all the H&S arrangements for that.

They also do HIAB deliveries, they work

within hospitals delivering and collecting bed linen and they do a lot of work in the automotive sector.'

Says Chris, 'I am consistently pleased with the service we receive from Ruth and the team. I wouldn't hesitate to recommend Labyrinth to others.'

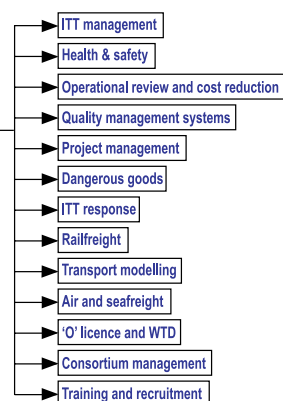


#### WHATEVER YOU NEED...

everything you ever wanted to know about  
**transport consultancy**  
without the strategic gobbledegook

**01926 430362**

[consultancy@labyrintholutions.co.uk](mailto:consultancy@labyrintholutions.co.uk)  
[www.labyrintholutions.co.uk](http://www.labyrintholutions.co.uk)



LET LABYRINTH LEAD YOU THROUGH THE MAZE