

2006

Leading the way...

ROAD RISK—ARE YOU COVERED?

OCCUPATIONAL ROAD RISK
page 1

NEW ASSOCIATE AT LABYRINTH
page 1

DANGEROUS GOODS UPDATE
page 2

NEW DRIVER VERIFICATION SYSTEM LAUNCHED
page 2

LABYRINTH'S RECORD YEAR
page 2

HAVE YOU NOTICED that motorways are closed for longer these days after a serious accident? This is because the Police now spend much longer conducting investigations following accidents, and they follow more rigorous procedures. One of the areas they look into is whether an accident involved someone who was driving as part of their job. If so, the HSE will usually get called in. Their investigation may cover areas such as how far staff are expected to travel between appointments, and whether they are getting excessively tired due to work-related driving.

Many companies overlook one of the most fundamental areas of risk within their business – that of Occupational Road Risk. If you don't employ lorry drivers, you may start to glaze over – but this affects **all** staff who drive as part of their job, including sales reps, managers, van drivers and probably **you**. Has your company formally assessed the risk posed by your staff out on the road? Do you have a stated policy? Do you provide equipment and training to keep staff safe,

even if they break down? It's not just about issuing hands-free kits!

To find out more, start by visiting the HSE website and downloading a copy of 'Driving at Work' (currently at www.hse.gov.uk/pubns/indg382.pdf). Labyrinth offer access to driver safety training, and can help you ensure that staff have the necessary equipment and knowledge in case of a breakdown or accident. Driver kits like the one shown here can be ordered at www.BSafeBSeen.co.uk, which is run by our Associate Len Hall.



New Associate joins Labyrinth



LAWRENCE ROBINSON is our newest Associate. He joined us in November as a Change Management specialist and has an impressive CV, starting out as an engineering graduate then completing his MBA at Cranfield whilst working in book distribution. He is also taking his NEBOSH Certificate in Health & Safety to broaden his skills base further.

If you have any major changes coming up in your business, please ring **01926 430362** to find out how Lawrence can help.

WHATEVER YOU NEED...

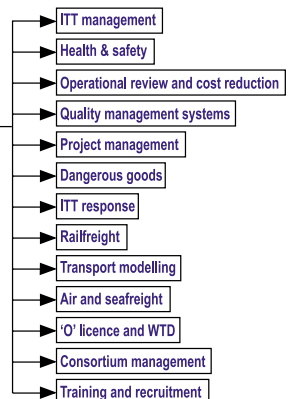
everything you ever wanted to know about

transport consultancy

without the strategic gobbledegook

01926 430362

consultancy@labyrintholutions.co.uk
www.labyrintholutions.co.uk



LET LABYRINTH LEAD YOU THROUGH THE MAZE

DANGEROUS GOODS

New rules in place and actively policed

AFTER THE SEPTEMBER 11TH attacks in the US, the regulators for the carriage of dangerous goods became nervous about the potential for terrorists to use dangerous goods as a means of creating mayhem and loss of life in our major cities. It doesn't take a great deal of imagination to foresee the effects of the cargo of some commonplace road transport vehicles in the hands of those who may wish to do harm on a large scale.

Initially there was a voluntary code of practice and this was incorporated into ADR 2005 and as a result became part of the UK Carriage Regulations. The Regulations set out duties at two levels, the lowest level – which applies to any vehicle displaying orange plates – requires drivers to carry photo ID and anyone involved to have awareness training. At the higher level of 'High Consequence Dangerous Goods' – which includes such things as large quantities of explosives, tankers of flammable liquids and goods of packing group one – a further full risk assessment and emergency



WITH THANKS TO GEFCO UK

action plan are also required.

There is a wealth of information about the new rules on the Department for Transport website – www.dft.gov.uk – including a free DVD/video available on request. The security requirements of ADR are being actively policed, albeit with a soft approach at present, by VOSA who, as well as carrying out roadside vehicle checks, are visiting haulage contractors to ensure that driver training reflects these new requirements and, where appropriate, that security arrangements have been assessed and action plans drawn up.

DON'T FORGET THAT LABYRINTH CAN ADVISE YOU ON ALL THE AREAS COVERED IN THIS NEWSLETTER.

PLEASE CONTACT DIRECTOR RUTH WARING ON 01926 430362 OR THE EMAIL BELOW TO FIND OUT MORE.

Check out your drivers

BOTH TRAINING AND VETTING are becoming critical in today's environment with financial implications and loss of goods creating additional pressures on business.

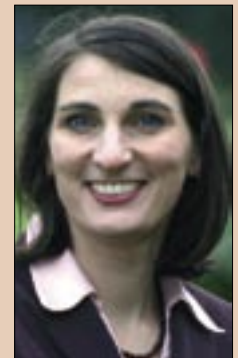
We were therefore very interested to hear, at our recent Associates meeting, about a new product which is scheduled to commence trials in Scotland early next year. The company intends to provide the haulage industry and transport users with a simple and effective driver verification system that confirms training and level of vetting. The product was innovative and surprisingly not expensive with the potential to contribute to crime prevention initiatives and other areas which are receiving a higher profile these days.

You heard it here first and while their website is being completed you can make contact via Labyrinth or email them at info@ucanverify.com.

Thank you for a record year!

LABYRINTH has had an excellent trading year, with turnover significantly up and three new Associates joining us to keep up with demand. We are particularly proud of the fact that our work comes in from existing as well as new customers. We have recently completed projects looking at consortium management within the timber industry, produced a cost reduction strategy for a major retailer, and done a series of UK-wide risk assessments for a major pan-European haulier. We are also now working with a training provider specialising in the logistics industry.

Having recently attended a fabulous Business Booster course (check out www.abctd.co.uk) we're now on track to move to even bigger and better things. So many thanks to all our customers old and new.



Ruth Waring, Managing Director
ruthwaring@labyrintholutions.co.uk

www.labyrintholutions.co.uk ■ 01926 430362